

Setting up your VPN under Windows Vista or 7

Setting up VPN access under Windows Vista or 7 is simple. The following instructions go step-by-step through the creation process.

The things to click and places to type your information are highlighted in red, yellow, green, and/or blue.

System Requirements

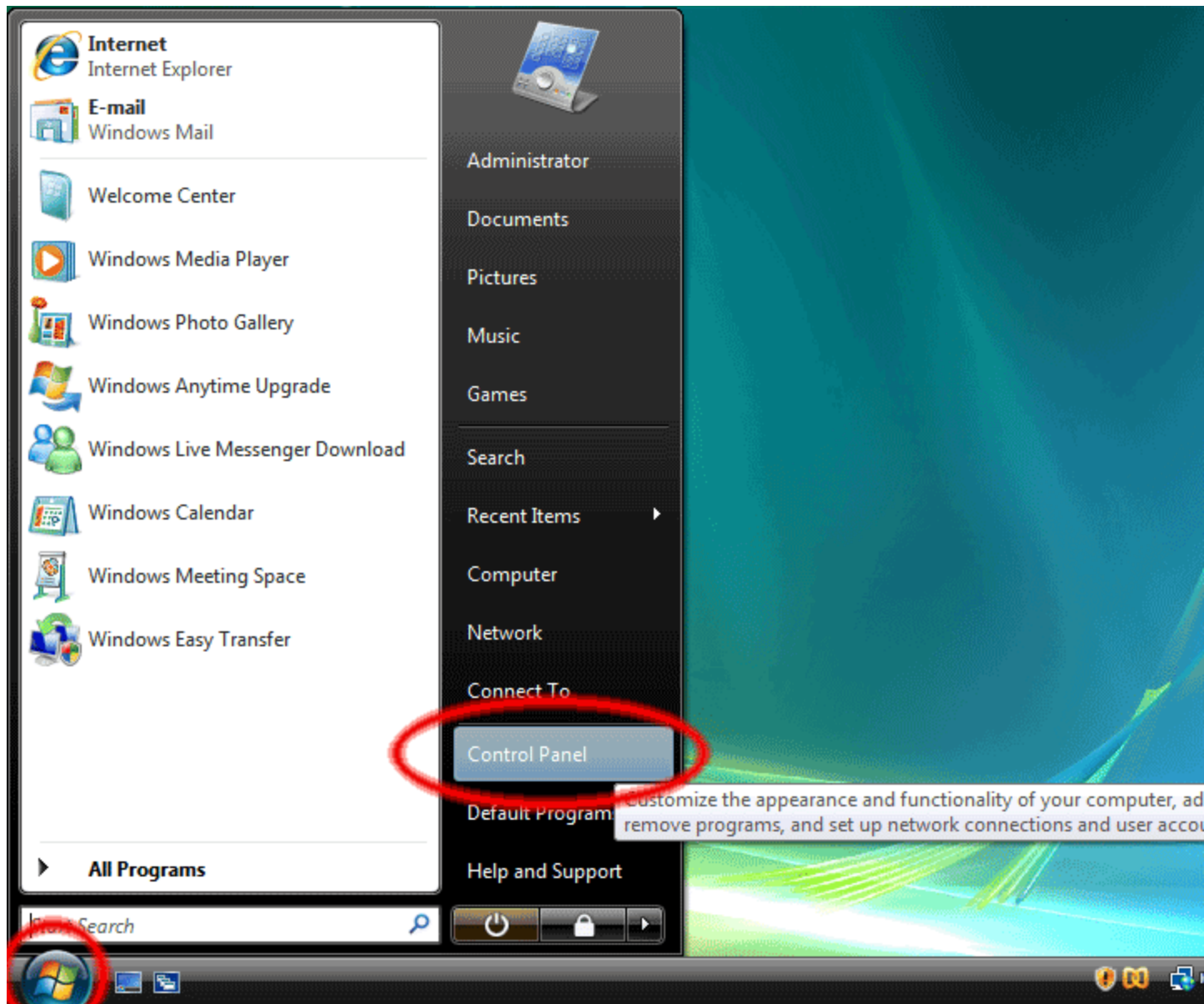
Before setting up your VPN connection, make sure your version of Windows Vista or 7 is up to date by running Windows Update.

Make sure your system is up-to-date

Be sure that you run Windows Update before setting up your VPN connection.

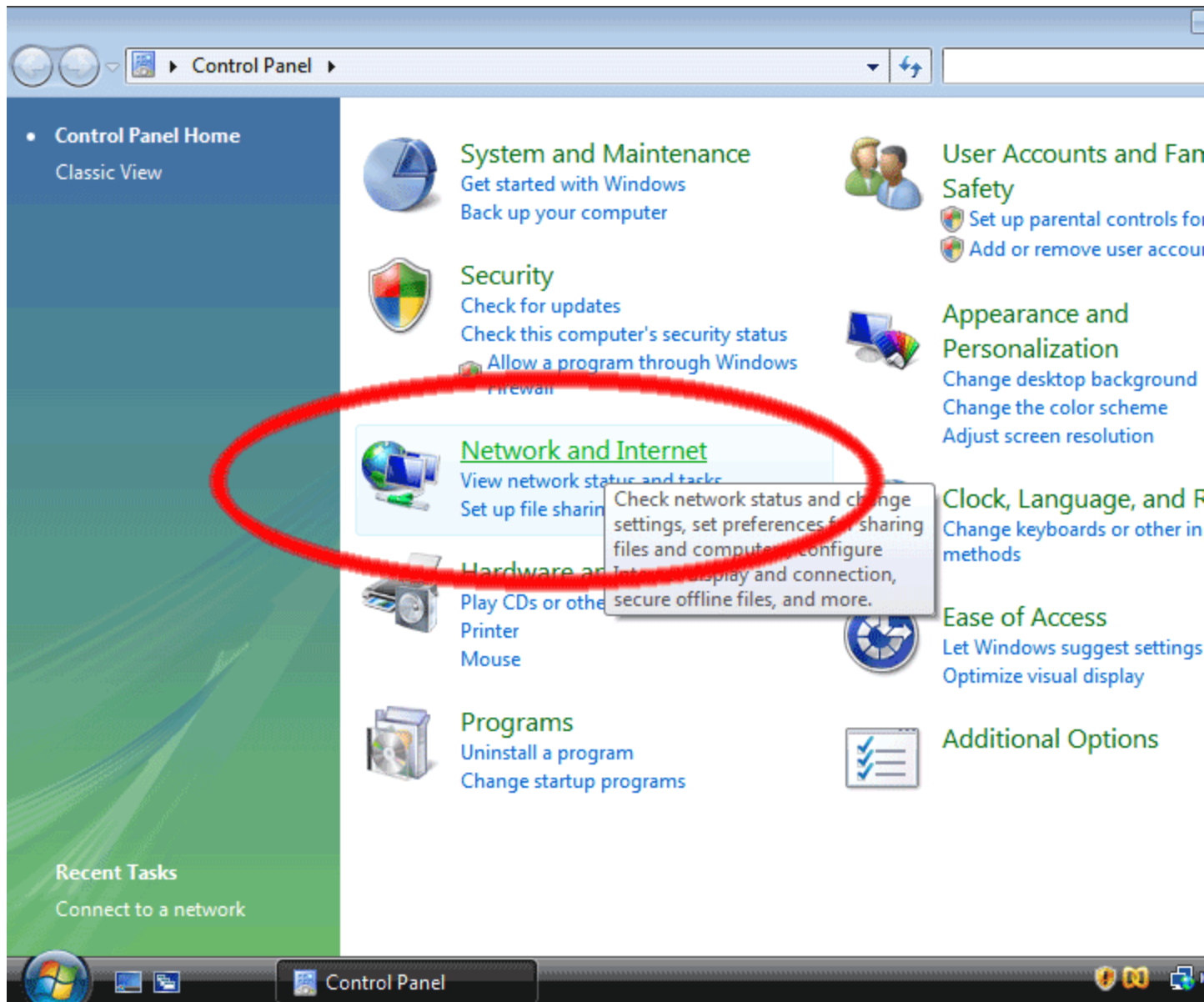
Open the Control Panels

First, click on the Start button and click "Control Panel". This opens up the "Control Panel Home."



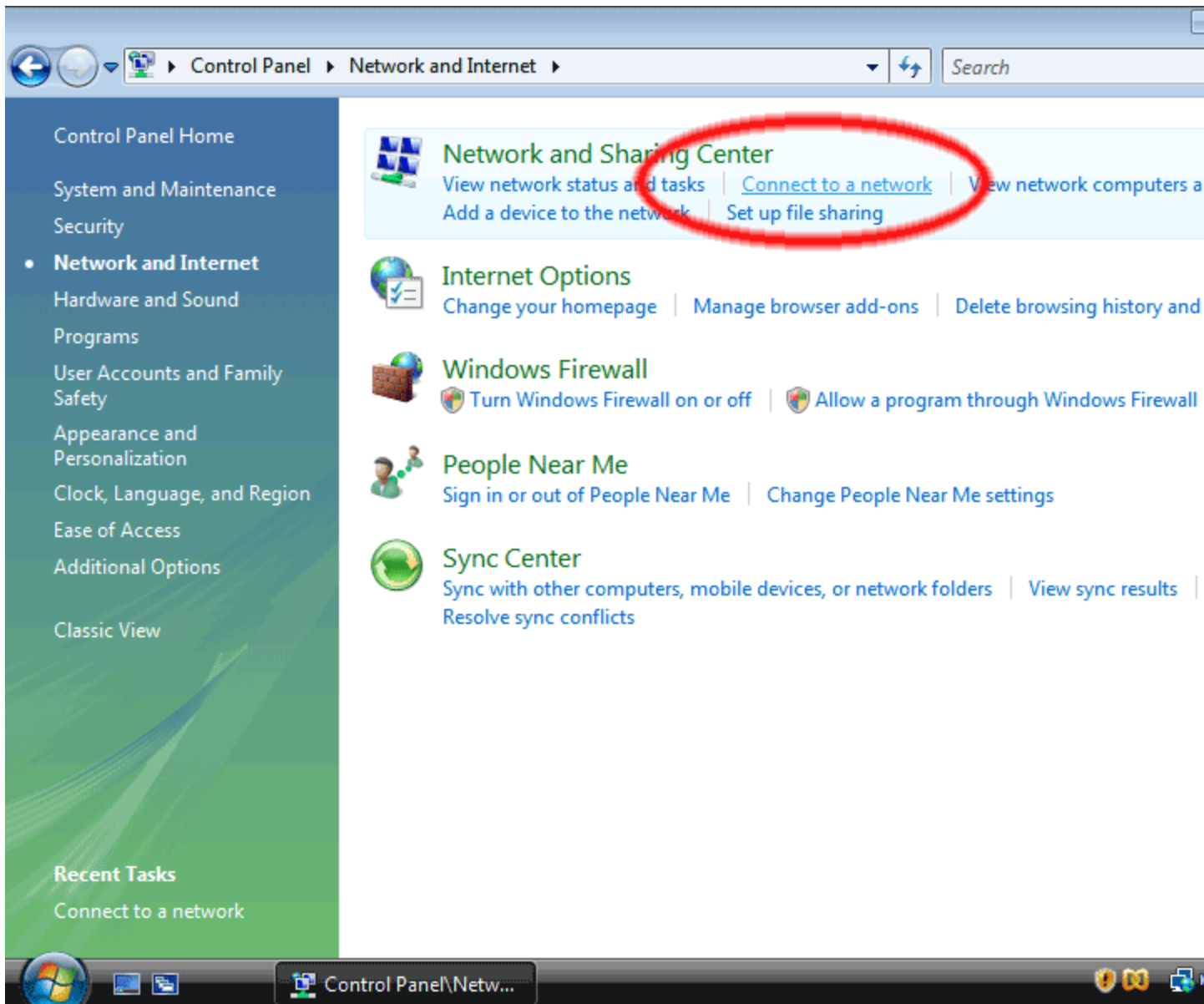
Go to the “Network and Internet” panel

Next, click on the “Network and Internet” control panel, which is circled in red below.



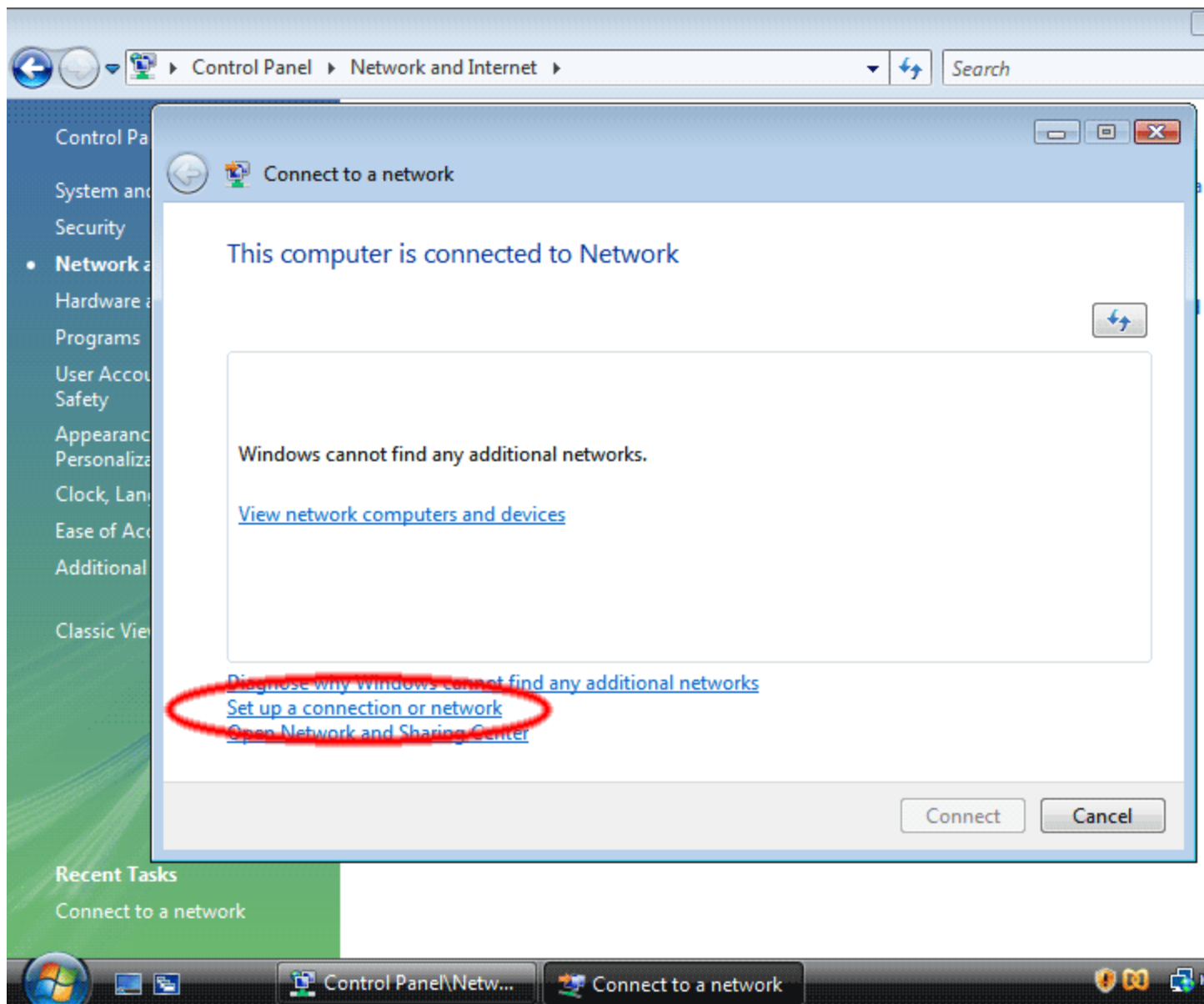
Connect To A Network

Next, click on "Connect to a network."



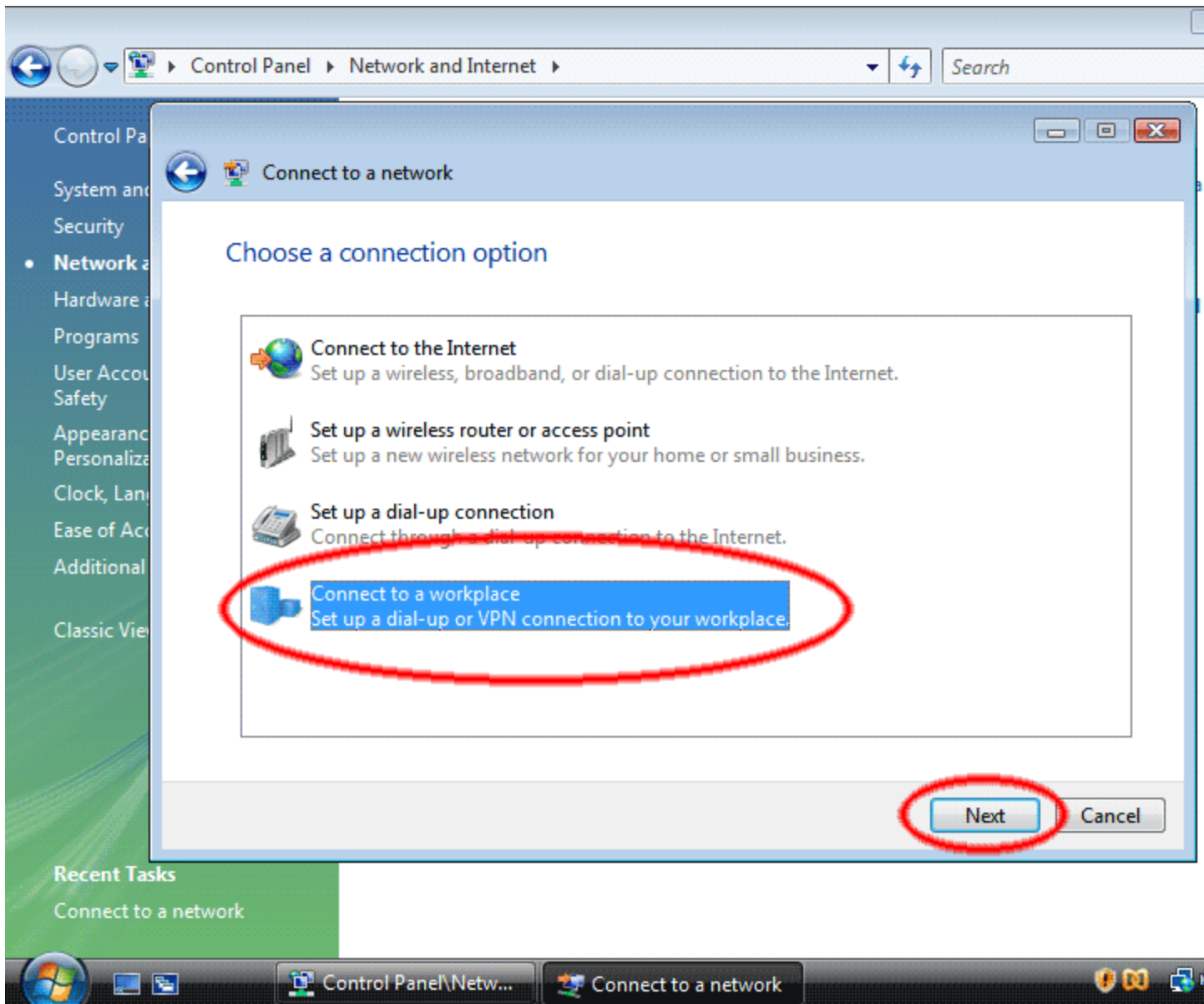
Set up the VPN connection

The next screen may not look quite like this if you have networks already defined. In any case, click on “Set up a connection or Network.”



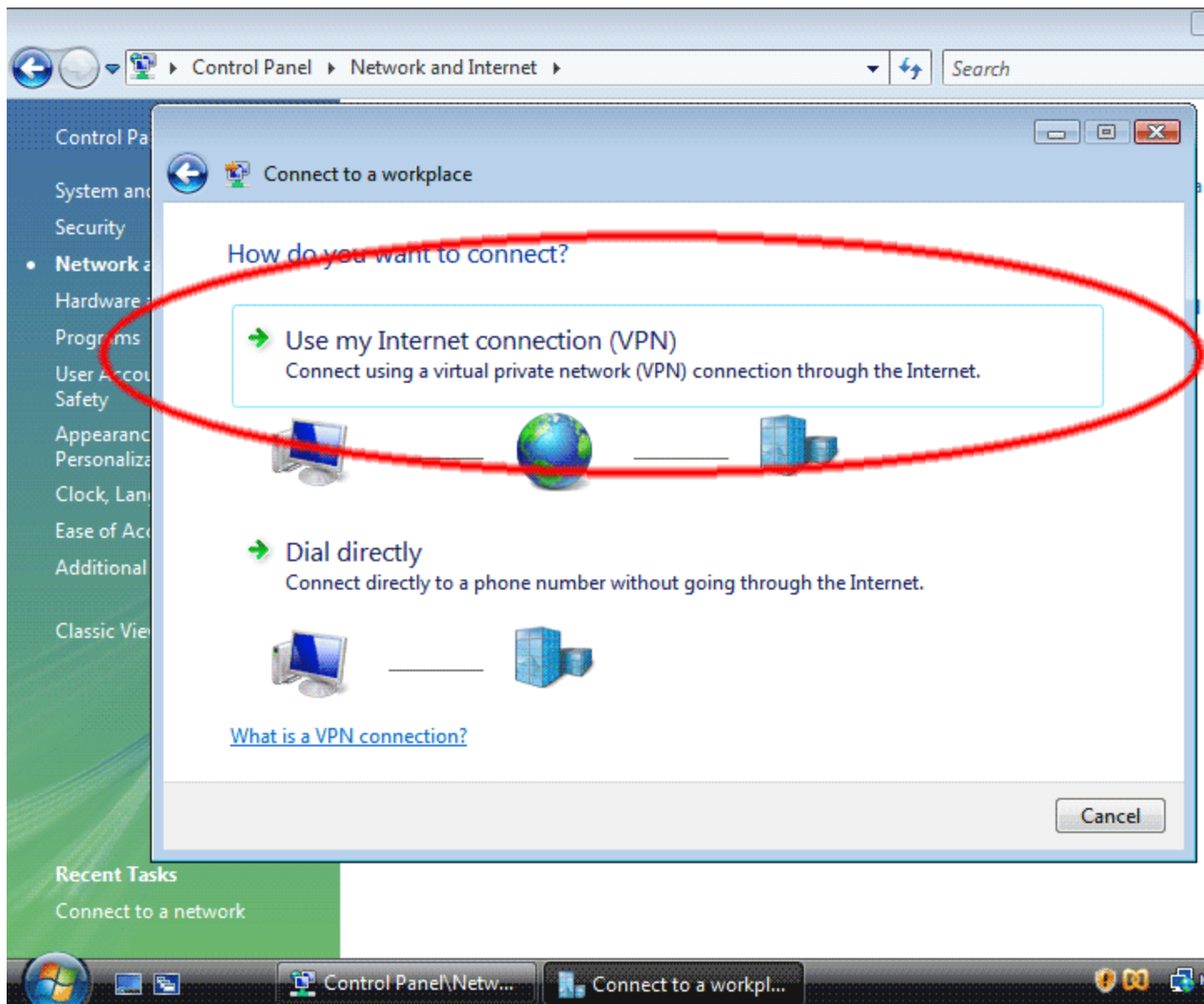
Choose the Connection Type

On the next screen, click on "Connect to a workplace" then click "Next."



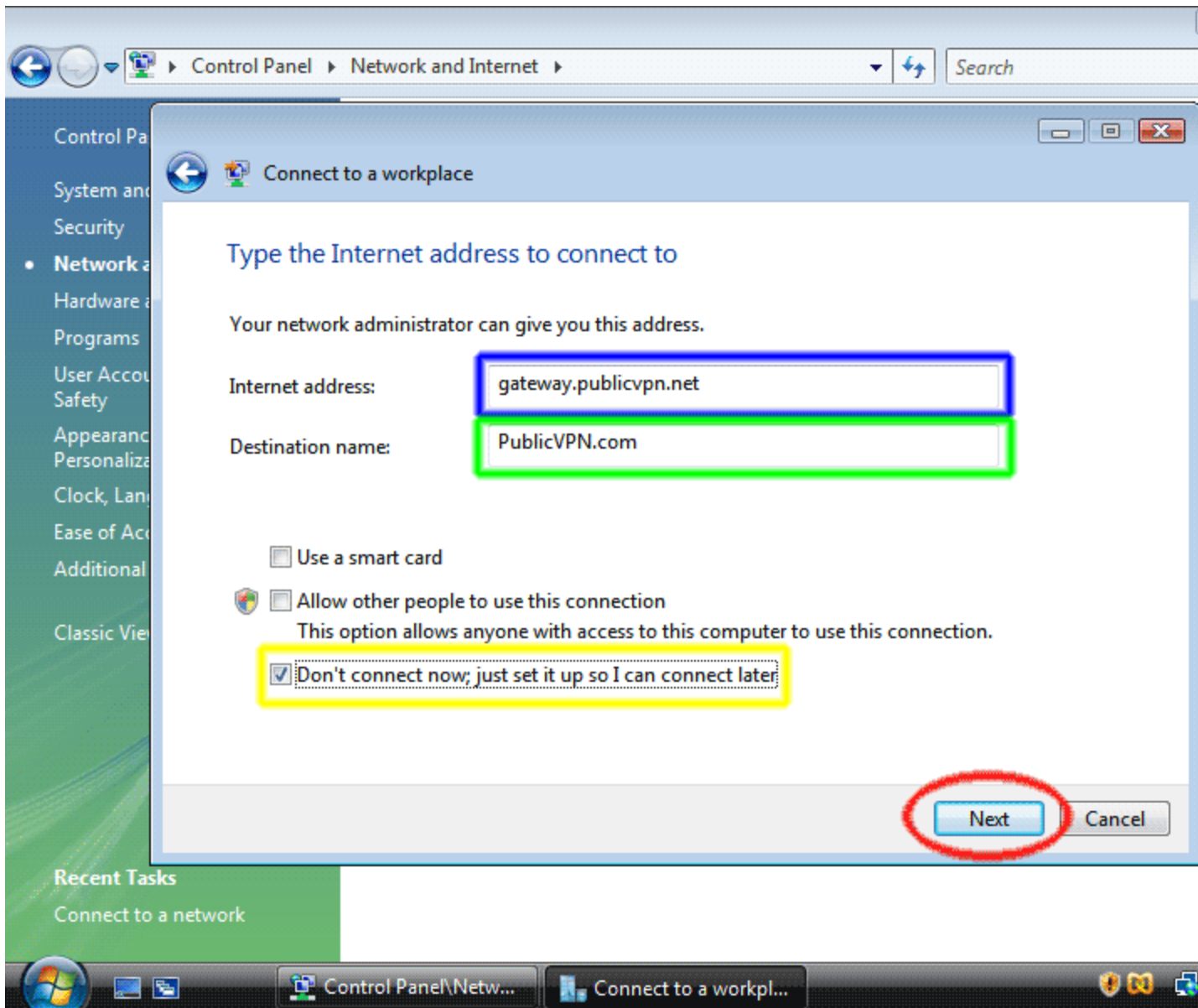
Select the Internet connection

Next click "Use my Internet connection (VPN)."



Enter the server information

Now, enter the server information.



In the text box labeled 'Internet address' (highlighted in blue) type the static IP or DynDNS.org address provided to you. This is the Internet address of the PublicVPN.com servers.

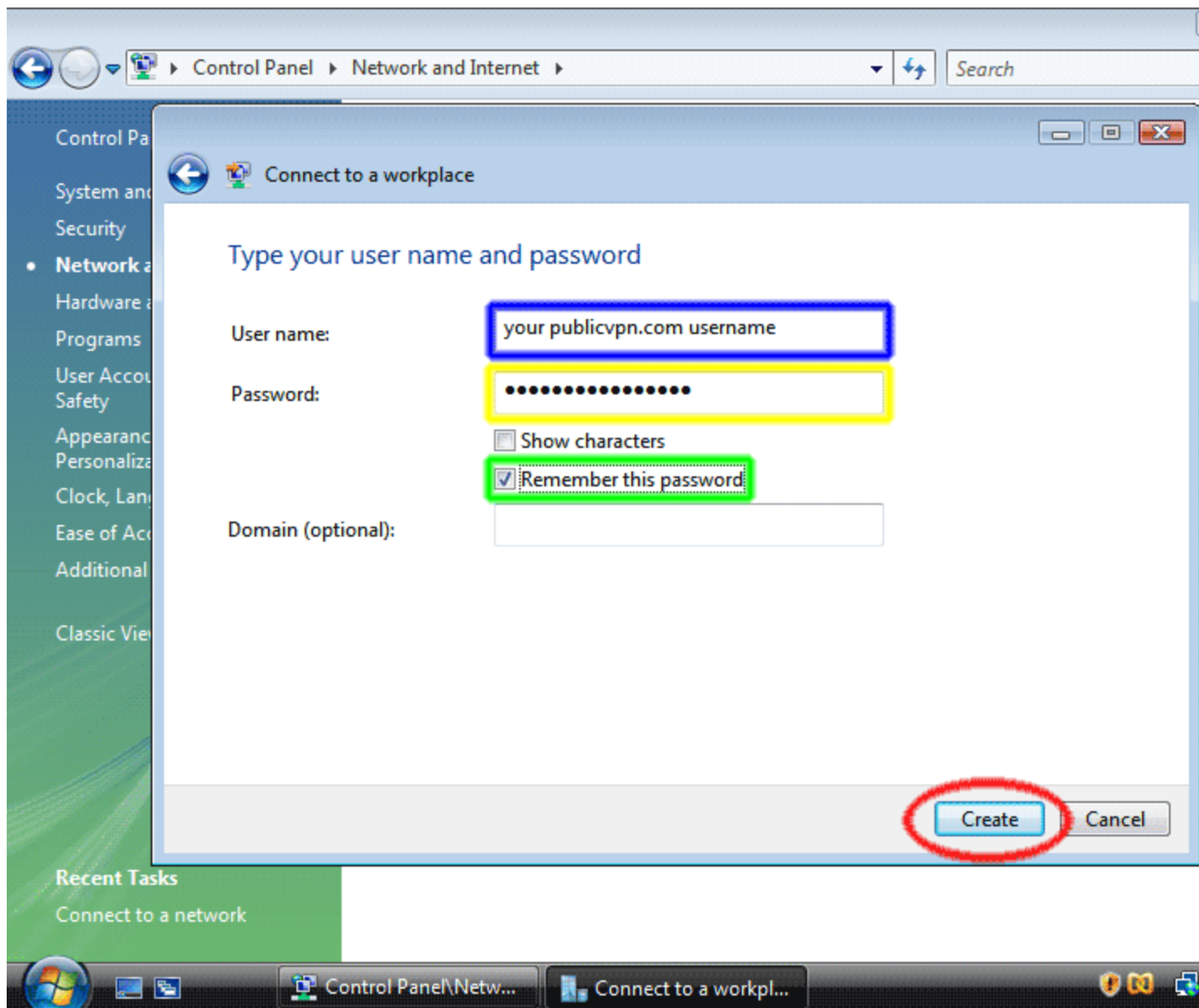
In the text box labeled 'Destination name' (highlighted in green) type a description. This is the name of the connection, and will show up in the "Connect to a network" screen when we're done.

Lastly, make sure that the checkbox labeled "Don't connect now; just set it up so I can connect later" (highlighted in yellow) is checked.

Then click the "Next" button.

Enter your username and password

In this screen, enter your username and password. This is provided by I2C.



In the text box labeled “User name:” (highlighted in blue), enter your username.

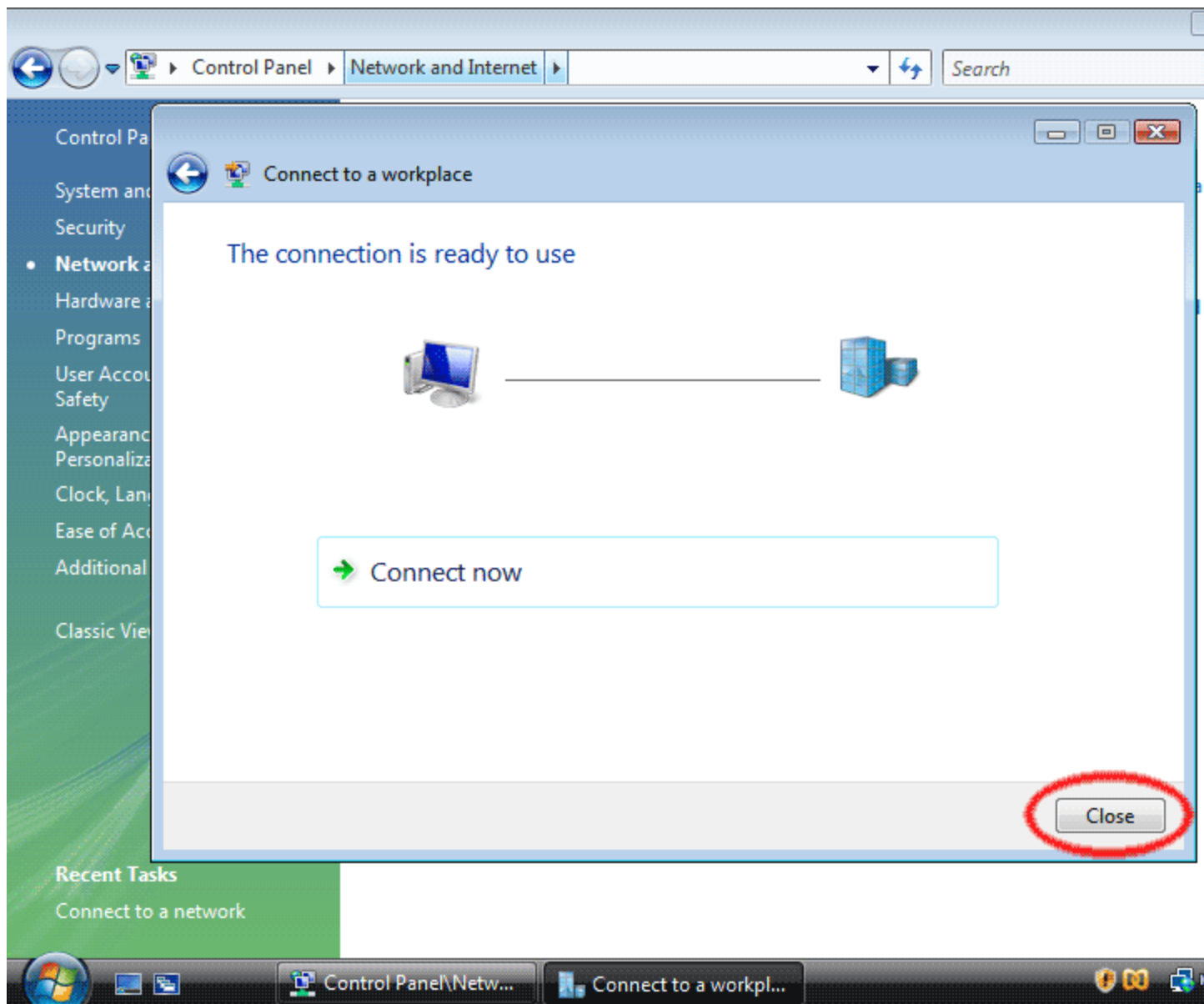
In the text box labeled “Password:” (highlighted in yellow), enter your password.

Optionally, check the “Remember this password” checkbox (highlighted in green) and you won’t have to enter your password when you connect to VPN.

Then, click the “Create” button.

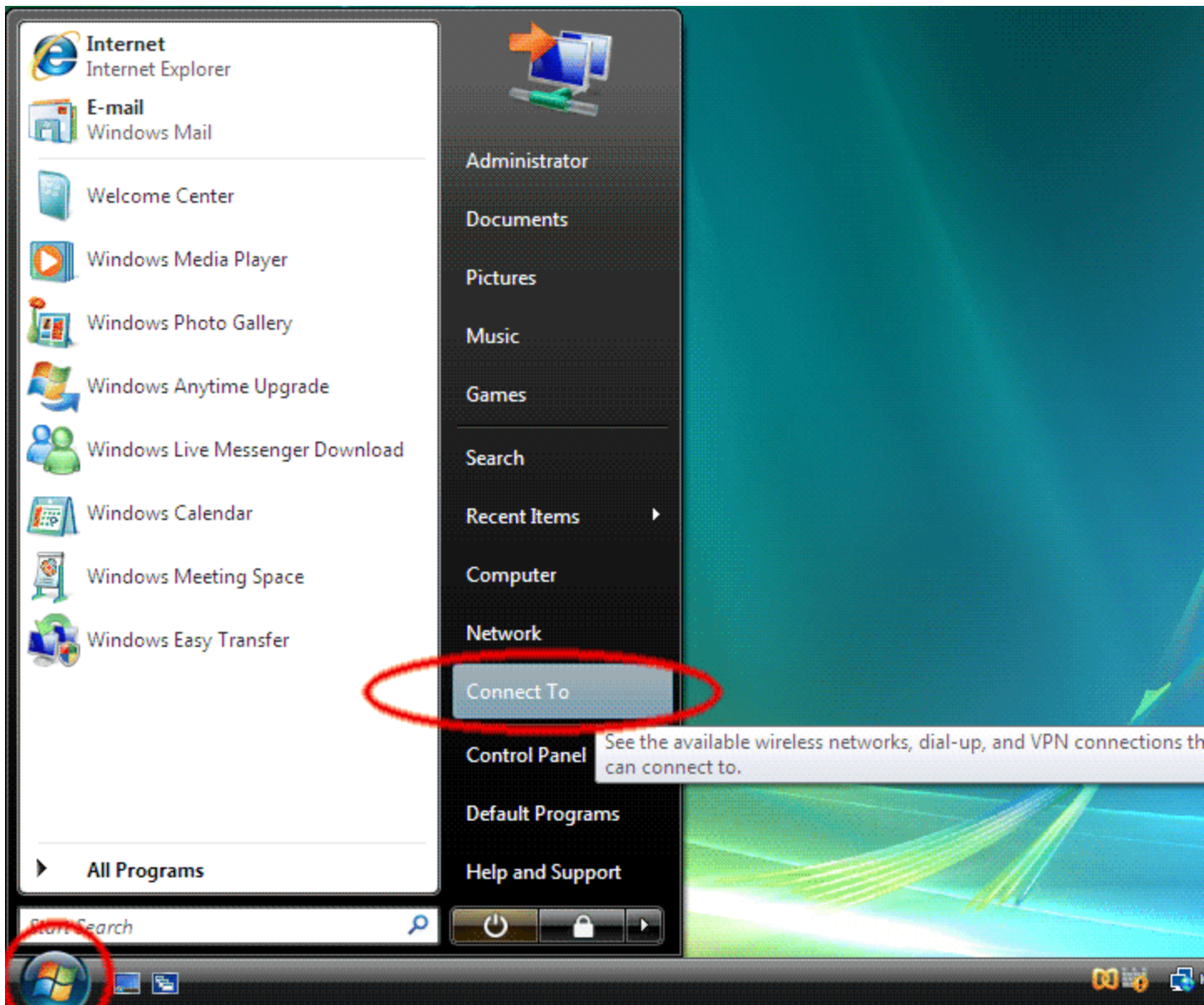
Connection Ready

You should see this screen next. Click the “Close” button to return to the “Network and Internet” screen.



Connecting to PublicVPN.com

To connect to VPN, go to the Start button and click "Connect To".



Then click on the VPN entry and click "Connect".



Connect to a network

Select a network to connect to

Show All

	PublicVPN.com	VPN connection	
--	---------------	----------------	--

[Diagnose why Windows cannot find any additional networks](#)
[Set up a connection or network](#)
[Open Network and Sharing Center](#)

Connect Cancel



Connect to a network

